

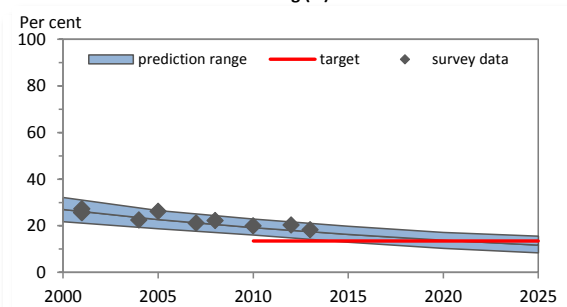
**Table 1. Population aged 15 years and over (thousands)**

Year	Men	Women	Both sexes
2000	7,509	7,756	15,265
2005	8,109	8,358	16,467
2010	8,974	9,187	18,160
2015	9,549	9,789	19,339
2020	10,105	10,387	20,491
2025	10,699	11,034	21,733

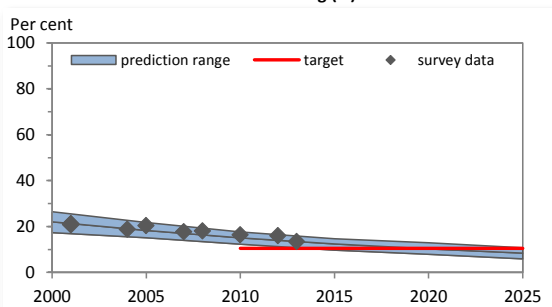
**Table 2. Fitted trends in current tobacco smoking among persons aged 15 years and over**

Year	CURRENT TOBACCO SMOKING (%)									
	Men			Women			Both sexes			Estimated no. of current smokers
	Lower 95% CI	Point estimate	Upper 95% CI	Lower 95% CI	Point estimate	Upper 95% CI	Lower 95% CI	Point estimate	Upper 95% CI	
2000	21.7	<b>27.0</b>	32.1	17.3	<b>22.0</b>	26.4	19.5	<b>24.5</b>	29.2	3,733,700
2005	18.7	<b>22.7</b>	26.5	15.1	<b>18.3</b>	21.7	16.9	<b>20.5</b>	24.1	3,370,200
2010	16.0	<b>19.2</b>	22.9	12.3	<b>15.0</b>	17.6	14.1	<b>17.1</b>	20.2	3,101,000
2015	12.9	<b>16.3</b>	19.8	9.7	<b>12.4</b>	14.7	11.3	<b>14.3</b>	17.2	2,770,400
2020	10.3	<b>13.8</b>	17.1	7.9	<b>10.2</b>	12.9	9.1	<b>12.0</b>	15.0	2,453,900
2025	8.4	<b>11.7</b>	15.5	5.9	<b>8.4</b>	10.7	7.1	<b>10.0</b>	13.1	2,178,600
Voluntary target (30% relative reduction from 2010 to 2025)		<b>13.4</b>			<b>10.5</b>			<b>12.0</b>		

**Men - fitted current tobacco smoking (%)**



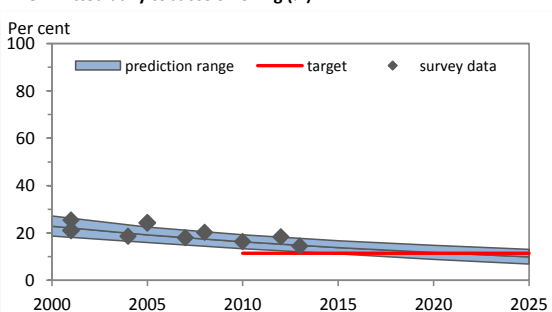
**Women - fitted current tobacco smoking (%)**



**Table 3. Fitted trends in daily tobacco smoking among persons aged 15 years and over**

Year	DAILY TOBACCO SMOKING (%)									
	Men			Women			Both sexes			Estimated no. of daily smokers
	Lower 95% CI	Point estimate	Upper 95% CI	Lower 95% CI	Point estimate	Upper 95% CI	Lower 95% CI	Point estimate	Upper 95% CI	
2000	18.7	<b>22.8</b>	27.2	16.2	<b>19.4</b>	23.5	17.4	<b>21.1</b>	25.3	3,216,600
2005	16.0	<b>19.2</b>	22.5	13.5	<b>15.9</b>	18.9	14.7	<b>17.5</b>	20.7	2,885,800
2010	13.3	<b>16.3</b>	19.2	10.9	<b>13.2</b>	15.6	12.1	<b>14.7</b>	17.4	2,675,400
2015	11.2	<b>13.8</b>	16.7	8.8	<b>10.9</b>	13.1	10.0	<b>12.3</b>	14.9	2,384,800
2020	8.8	<b>11.7</b>	14.8	6.9	<b>8.9</b>	11.4	7.8	<b>10.3</b>	13.1	2,106,700
2025	6.9	<b>9.9</b>	13.1	5.1	<b>7.4</b>	9.6	6.0	<b>8.6</b>	11.3	1,875,700
Voluntary target (30% relative reduction from 2010 to 2025)		<b>11.4</b>			<b>9.2</b>			<b>10.3</b>		

**Men - fitted daily tobacco smoking (%)**



**Women - fitted daily tobacco smoking (%)**

